

**A VERY LARGE FARM MACHINERY AUCTION**

**Wed., December 11, 2024**  
EARLY START: 9:00 A.M.



**OWNER: CHARLIE REAMS FARMS**

**DIRECTIONS:** From Fulton, KY at the intersection of Plain St. and State Route 129 (E State Line St.), head East on State Route 129 (E State Line St.) for 1 mile. At the intersection of State Route 129 (E State Line St.), and Country Club Road, turn right onto Country Club Road and go South for 1.1 miles. The sale site will be on your left. **PHYSICAL ADDRESS:** Reams Farms, 5122 Country Club Road, South Fulton, TN 38257

Auction Conducted By:  
DeWitt Auction Co.  
220 DeWitt Drive  
Sikeston, MO 63801

FIRST CLASS  
U.S. POSTAGE  
PAID  
Permit No. 273  
1 OZ.  
Sikeston, Mo. 63801

**A VERY LARGE FARM MACHINERY AUCTION**

**WEDNESDAY, DEC. 11, 2024** EARLY START: 9:00 A.M.

**SOUTH FULTON, TENNESSEE**

**OWNER: CHARLIE REAMS FARMS**

**AUCTIONEER'S NOTE:** Charlie Reams is retiring and has commissioned DeWitt Auction Co. to sell the following list of late-model very clean farm equipment at public auction. **FINANCING AVAILABLE THROUGH AG DIRECT. CALL KYLE THOMAS 931-619-3577.**

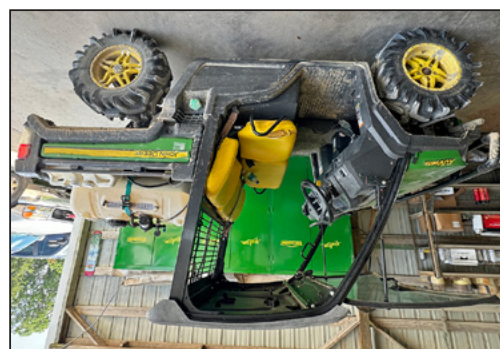
Online bidding available at:  
**Equipmentfacts**  
Powered by TractorParts.com, MachineryTrader.com, TractorTrader.com & TractorData.com



**DIRECTIONS:** From Fulton, KY at the intersection of Plain St. and State Route 129 (E State Line St.), head East on State Route 129 (E State Line St.) for 1 mile. At the intersection of State Route 129 (E State Line St.), and Country Club Road, turn right onto Country Club Road and go South for 1.1 miles. The sale site will be on your left. **Physical Address:** Reams Farms, 5122 Country Club Road, South Fulton, TN 38257



**SEE INSIDE FOR FULL LISTING AND MORE PHOTOS**



Online bidding available at:  
**Equipmentfacts**  
Powered by TractorParts.com, MachineryTrader.com, TractorTrader.com & TractorData.com

**OWNER: CHARLIE REAMS FARMS**  
**SOUTH FULTON, TENNESSEE**

EARLY START: 9:00 A.M.

**WEDNESDAY, DECEMBER 11, 2024**

**A VERY LARGE FARM MACHINERY AUCTION**

**LUNCH AVAILABLE**    **LOADER AVAILABLE**    **SALE CONDUCTED BY:**

## DeWitt Auction Co.

Member Mo. & Miss. Auctioneer Assoc. - Lic. Nos: MO 14 & 85; AR 390 & 404; AL 611 & 1317; LA 239; Phil DeWitt MS 292; IL Firm No. 444000276; MS Firm No. 410F; TX 6538 & 10982; TN Firm No. 2422; KY 6028; FL 1535; Brandon DeWitt AR 2535, MS 1471, IL 441.002267, KY 4216, TN 6941; Jack Holifield TN 6847, AL 5350, LA 19365

**220 DeWitt Drive**  
**Sikeston, MO 63801**  
**573-471-1060**

*"Your Attendance Always Appreciated"*  
Note: DeWitt Auction Co. does not guarantee the hours or condition of any item sold in this auction. Announcements made auction day take precedence over printed material.

**FOR MORE INFORMATION, CONTACT:**  
**James Lee 270-627-4469**  
**Charlie Reams 731-446-0287**  
or DeWitt Auction Co. 573-471-1060  
or visit [www.dewittauction.com](http://www.dewittauction.com)

**VISIT OUR WEBSITE:**  
[www.dewittauction.com](http://www.dewittauction.com)



# A VERY LARGE FARM MACHINERY AUCTION

**WEDNESDAY, DEC. 11, 2024** EARLY START: 9:00 A.M.

**OWNER: CHARLIE REAMS FARMS**

## TRACTORS

- 1-9570RX John Deere, 30" tracks, power shift, 5 remotes, PTO, 2140 hrs., 2020 yr., extended wty. powertrain Oct. 2025, SN 1RW9570RHL809542
- 1-9570RX John Deere, 30" tracks, power shift, 5 remotes, PTO, 3200 hrs., 2018 yr., SN 1RW9570RKJP805636
- 1-8R370 John Deere, 480/80R50R1 duals, ILS, 420/85R34 front duals, power shift, E-23, 5 remotes, Activeseat II Signature Edition, 866 hrs., 2022 yr., extended wty. powertrain July 2026, SN 1RW8370DANB204147
- 1-8R370 John Deere, 480/80R50 R1 duals, ILS, 420/85R34 front duals, power shift, E-23, 5 remotes, Activeseat II Signature Edition, 876 hrs., 2022 yr., extended wty. powertrain July 2026, SN 1RW8370DANB204244
- 1-8R310 John Deere, 480/80R50 R1 duals, ILS, 420/85R34 front duals, IVT trans, 5 remotes, prem. cab, Activeseat II, 791 hrs., 2023 yr., extended powertrain wty. Apr. 2026, SN 1RW8310DPL223397
- 1-5075E John Deere MFWD, open station, 16.9x28R1 duals, mid valve, 231 hrs., 2021 yr., w/520 JD loader, limited basic wty. Oct. 2026
- 1-4500 John Deere tractor, w/440 JD loader
- 1-H Farmall

## COMBINES, HEADERS

- 1-S790 John Deere, 640/85R38 R1 duals, 750/65R26 rear, 4 wh., prem. cab, pro drive, Contour, extended wear, round bar, TriStream roto, chopper, power bin, 330 hrs., 2024 yr., extended power train wty. June 2027, SN 1HO5790SHRT830148
- 1-S780 John Deere, 650/85R38 R1 duals, 750/65R26 rear, 4 wh., prem. cab, pro drive, Contour, chopper, round bar TriStream roto, extended wear grain handling, power bin, 248 hrs., 2024 yr., extended powertrain wty. June 2027
- 1-HD50F John Deere flex draper, fits X Series combine, flip over reel, 2023 yr., SN 1HDHD50FHPO825481
- 1-RD45F John Deere flex draper, dual knife drive, flip over reel, 2023 yr., SN 1HDRDFAP O824100
- 1-RD40F John Deere flex draper, dual knife drive, flip over reel, 2024 yr., SN 1HORD40FCRO830336
- 1-24 row Geringhoff corn header, 20", 2010 yr., rebuilt 1 year ago, fits X Series or S Series, rebuilt, SN 7320102420B
- 1-18 row Geringhoff corn header, 20", Model NS18001FD, 2009 yr., rebuilt, SN 7143091820FB

- 1-618C John Deere corn header, 20", 2013 yr., SN HOO618PPX755192
- 1-J&M AWS header trailer
- 1-6000 Trailblazer header trailer
- 1-J&M AWS15 header trailer
- 1-545 Unverferth hi speed header trailer
- 1-J&M AWS52 header trailer
- 1-Horst all wheel steer header trailer
- 1-548 Road Runner header trailer

## SPRAYERS

- 1-408R John Deere, 380/90R46R1, 100' booms, 800 gal. stnls. tank, Custom Edition Activeseat II, JD exact apply, 540 hrs., 2024 yr., SN 1NO408RXCPO241132
- 1-408R John Deere, 380/90R46 R1, 100' booms, 800 gal. stainless tank, Custom Edition Activeseat II, JD exact apply, 420 hrs., 2024 yr., SN 1NO408RXERO241214

## PLANTERS, DRILLS

- 1-54 row 20" DB90 John Deere, central fill, var. rate, individual row, hyd. pneumatic closing wheels, rear steer, precision upgrading 2023, hyd. down pressure on wings, 7320 acres, elec. drive
- 1-36 row 20" DB60 John Deere, central fill, elect. drive, mini seed hopper, individual row, hyd. down force, Promax 40 flat disk, 2022 yr., hyd. down pressure on wings, 5850 acres, SN 1JLDB60MANE795208
- 1-36 row 20" DB60 John Deere, central fill, elect. drive, mini seed hopper, individual row down force, Pro Max 40 flat disk, 34,926 acres, rebuilt, SN 1PAM3620EAO755801
- 1-24 row 20" DB40 John Deere, central fill, variable drive, w/24 hyd. motors, mini seed hopper, pneumatic down force, 2011 yr., 8407 acres, SN 1AOD844XEBG740218
- 1-14 row 1720 John Deere planter, stack fold bar, 3 bushel boxes, 2023 yr.
- 1-12 row 20" 1720 John Deere on rigid bar
- 1-15' John Deere 1590 no till drill, 7.5" spacing

## TRUCKS, TRAILERS

- 1-2017 International day cab semi, air ride, 111,027 miles, VIN 577930
- 1-2015 International day cab semi, air ride, 123,289 miles, VIN 572111
- 1-2017 International day cab semi, air ride, 91,117 miles, VIN 204195
- 1-2017 International day cab semi, air ride, 579,123 miles, VIN 506153
- 1-2014 International day cab semi, air ride, 135,601 miles, VIN 562029
- 1-2004 International Eagle day cab semi, air ride, 680,000 miles, VIN 015494

- 2-2005 International Eagle day cab semis, air ride, 665,080 miles and 649,625 miles, VIN 316136
- 1-2006 International Eagle day cab semi, air ride, 709,577 miles, VIN 312374
- 1-2000 International Eagle day cab semi, air ride, 552,068 miles, VIN 069121
- 1-1987 International Eagle day cab semi, air ride, 518,229 miles, VIN 1261
- 1-2011 Wilson aluminum hopper bottom w/elect. tarp, VIN 3616874
- 1-2015 CTS hopper trailer, w/elect. tarp, 38', VIN 774
- 1-2014 CTS hopper trailer, w/elect. tarp, 38', VIN 511
- 1-2014 CTS hopper trailer, w/elect. tarp, 38', VIN 531
- 1-2017 CTS hopper trailer, w/elect. tarp, 38', VIN 426
- 1-2013 CTS hopper trailer, w/elect. tarp, 36', VIN 078
- 1-2014 CTS hopper trailer, w/elect. tarp, 38', VIN 510
- 1-2011 CTS hopper bottom, w/elect. tarp, 38', VIN 012
- 1-2005 CTS hopper bottom, w/elect. tarp, 36', VIN 950
- 1-Pitt low boy trailer, Model LB35.22DC, 2020, VIN 21337
- 1-1983 Holden low boy trailer, VIN 401690
- 1-KBH water trailer, 2020 yr., VIN 623272
- 1-Dump trailer
- 1-1989 Int. 4800 service truck, diesel, air, 91,126 miles
- 1-2013 Dodge Ram Dually, 125,000 miles, VIN 3C63RRKLDXG611290
- 1-2015 Dodge Ram 2500, diesel, VIN 528291
- 1-2012 Dodge Ram 3500, diesel, 157,617 miles, VIN 144810
- 1-2013 Dodge Ram 2500, diesel, 156,633 miles, VIN 516633
- 1-2007 Dodge Ram 2500, diesel, 241,000 miles, VIN 576779546
- 1-2004 Dodge Ram 2500, single cab, 2 wh., 219,000 miles, VIN 187943
- 1-Chevy C60 bob truck
- 1-Pin Hook flat trailer

# South Fulton, Tennessee

**AUCTIONEER'S NOTE:** Charlie Reams is retiring and has commissioned DeWitt Auction Co. to sell the following list of late-model very clean farm equipment at public auction.

**DIRECTIONS:** From Fulton, KY at the intersection of Plain St. and State Route 129 (E State Line St.), head East on State Route 129 (E State Line St.) for 1 mile. At the intersection of State Route 129 (E State Line St.), and Country Club Road, turn right onto Country Club Road and go South for 1.1 miles. The sale site will be on your left. **Physical Address:** Reams Farms, 5122 Country Club Road, South Fulton, TN 38257

**FINANCING AVAILABLE THROUGH AG DIRECT  
KYLE THOMAS 931-619-3577**

## TILLAGE EQUIPMENT

- 1-45D Kelly Diamond Harrow, 2013 yr., SN 2130130
- 1-45D Kelly Diamond Harrow, SN 2117022
- 1-50' Kuhn Krause Excelerator 8000, 2014 yr., rebuilt, SN 8000-50-3707
- 1-40' Kuhn Krause Excelerator XT 8010, 2022 yr., SN KKS1049P50B00714
- 1-40' Kuhn Krause Excelerator XT 8010-40, SN 00541
- 1-32'9" John Deere 637 disk
- 1-50' John Deere 2210 field cultivator, w/harrow
- 1-45' John Deere 2210 field cultivator, w/harrow
- 1-670 John Deere disk
- 1-45' DMI crumbler roller
- 1-50' DMI crumbler roller
- 1-200 DMI crumbler
- 1-12' Industrias America disk
- 1-7 tine Ecolo Tiger ripper
- 1-25' John Deere flat fold cultipacker
- 1-30' single crumble roller
- 1-McFarlane rolling harrow
- 1-Amco disk
- 1-30' Brillion X-fold roller
- 2-20' John Deere Model FC20M batwing mowers

## MISCELLANEOUS FIELD EQUIPMENT

- 1-15 row John Deere 2510 applicator, high flow, 1-2011 and 1-2010
- 3-23 row John Deere 2510 applicators, high speed, 1-2015 and 1-2013
- 1-Sukup 12 row 30' bedder
- 1-Thundercreek fuel trailer
- 1-Amco PTO ditcher
- 1-1,000 gallon poly water tank on trailer
- 1-John Deere XUV 865R Gator, 4163 miles
- 1-John Deere H480 loader
- 1-John Deere harrow
- 1-Blue Jet track remover
- 1-Howse 2 blade ditcher
- 1-Forest City 2 blade ditcher
- 1-Forest City PTO ditcher
- 1-Amco PTO ditcher
- 1-ATH 900 mower

- 1-Grapple & rack
- 1-750 gallon fuel tank on trailer
- 1-7' Bush Hog cutter
- 1-Oxbo Mew Leader fertilizer buggy, 800/45-26.5 tires

## CONSTRUCTION EQUIPMENT

- 1-210GLC John Deere excavator, air seat, rear camera, 2013 yr., 4694 hrs., SN 1FF210GXTDE521196
- 1-130GLC John Deere excavator, air seat, rear camera, 2014 yr., 2237 hrs., SN 1FF130GXEE040501
- 1-750K John Deere dozer, low ground, cab heater/air, air seat, 2013 yr., 4854 hrs., SN ITD750KXCDE245264
- 1-586G Case forklift, 2553 hrs.,
- 1-Cat V80E LP forklift
- 1-Nissan LP forklift
- 1-Wolk 450 self-propelled tile plow
- 1-3 pt. tile layer
- 1-Lot of tile pipe

## GRAIN CARTS, SEED TENDERS

- 1-1522-20 JM grain cart on tracks, SN 1801461
- 1-1412 JM grain cart on tracks, 2020 yr., SN 2010547
- 1-1000 JM grain cart, 1250x32 flotation tires
- 5-3750 XL Unverferth seed tenders, w/3 axles and scales
- 1-1050 Meridian seed trailer to fill 3750 Seed Runner, 2014 yr.

## MISCELLANEOUS

- 1-Large lot of guidance equipment, Starfire globes, screen, etc.
- 1-Large lot of radios
- 1-Large lot of Geringhoff header parts
- 1-Large lot of John Deere header parts and row units
- 1-Large lot of tires & wheels
- 1-Large lot of shop equipment, tools and miscellaneous
- 1-Large lot of planter parts

Online bidding available at:  
**Equipmentfacts**

LUNCH AVAILABLE  
LOADER AVAILABLE

SALE CONDUCTED BY  
**Dewitt Auction Co.**

Member Mo. & Miss. Auctioneer Assoc. - Lic. Nos: MO 14 & 85; AR 390 & 404; AL 611 & 1317; LA 239; Phil DeWitt MS 292; IL Firm No. 444000276; MS Firm No. 410F; TX 6538 & 10982; TN Firm No. 2422; KY 6028; FL 1535; Brandon DeWitt AR 2535, MS 1471, IL 441.002267, KY 4216, TN 6941; Jack Holifield TN 6847, AL 5350, LA 19365

220 DeWitt Drive, Sikeston, MO 63801  
573-471-1060  
www.dewittauction.com  
"Your Attendance Always Appreciated"

For more information, contact:  
**James Lee 270-627-4469**  
**Charlie Reams 731-446-0287**  
or DeWitt Auction Co. 573-471-1060

Planning an auction? Contact:  
**DeWITT AUCTION CO.**  
220 DeWitt Dr. Sikeston, MO 63801  
573-471-1060

Visit our website:  
www.dewittauction.com

Note: DeWitt Auction Co. does not guarantee the hours or condition of any item sold in this auction. Announcements made auction day take precedence over printed material.

