

REAL ESTATE Auction

FARMLAND, HOUSE & OTHER BUILDINGS

TUESDAY, DECEMBER 16, 2025 **SALE TIME: 2:00 P.M.**

POPLAR BLUFF, MO 40 Acres +/- Located In Butler County, MO
Township 24N, Range 6E, Section 24

AUCTIONEER'S NOTE: DeWitt Auction Co. has been commissioned to sell the real estate described herein at public auction. The real estate is located minutes away from downtown Poplar Bluff, MO. The real estate includes a house, buildings, and farmland. The farmland could be row cropped or to raise livestock. The new owners may take possession of the real estate following the Circuit Court's approval of the final sale. Buyers may have the option to purchase title insurance from Heritage Title at the Buyer's sole expense. The real property will be sold "AS IS."

FORMER OWNER: MEREDITH R. BOYERS

LEGAL DESCRIPTION: The North half of the Northeast Quarter of the Northeast Quarter of Section 24, Township 24 North Range 6 East. AND, the South Half of the Northeast Quarter of the Northeast Quarter of Section 24, Township 24 North Range 6 East.

DIRECTIONS TO PROPERTY: From Poplar Bluff, MO, at the intersection of S. Broadway/Ditch Rd. and MO-53 S, head South on MO-53 S for 1.3 miles to County Road 608. Turn left and head East on County Road 608 for 1.4 miles and the Property will be located on the right/south side of the road.

Physical Address: 1082 County Road 608, Poplar Bluff, MO 63901

Sale Site Location: The Auction will be held at the Poplar Bluff

Municipal Airport, 2903 State Hwy B, Poplar Bluff, MO 63901

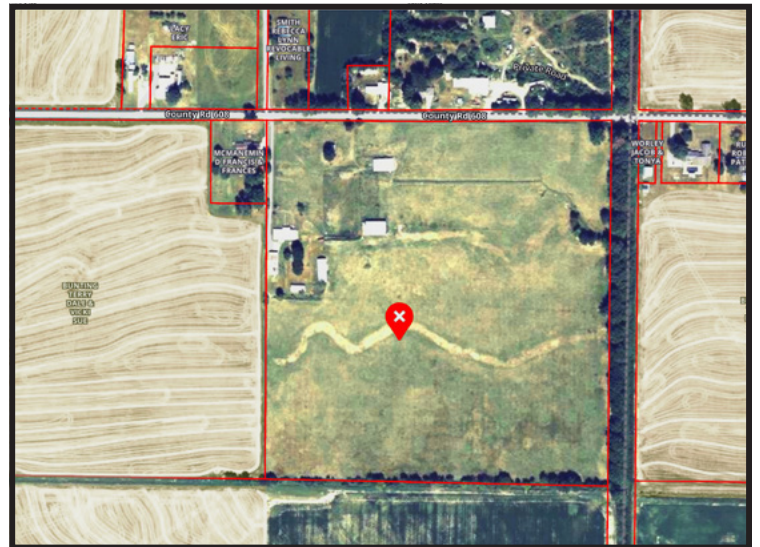
DIRECTIONS TO SALE SITE: From Poplar Bluff, MO, at the intersection of US-60 Bus E/W and State Hwy B, Take that State Hwy B Exit toward Rombauer/Black River Industrial Park Rd. Turn Right onto State Hwy B. Head East on State Hwy B for 2.7 miles and the airport/auction site will be located on your left/north side of the road.

**FOR MORE
INFORMATION, CALL:
Brandon DeWitt
573-380-5675
or DeWitt Auction Co.
573-471-1060**

TERMS: 10% of highest bid (non-refundable due at conclusion of auction. Balance due on or before closing within 60 days. Closing will be handled by Circuit Court of Butler County. Closing costs will be paid by buyer, where applicable.

8% Buyer's Premium will be added to last bid in order to establish selling price and is payable day of auction.

NOTE: We urge you to drive out and inspect this fine property before auction day.



FOR MORE PHOTOS, VISIT OUR WEBSITE: www.dewittauction.com

Visit our website:
www.dewittauction.com

AUCTION CONDUCTED BY:
DeWitt Auction Co.

Visit our website:
www.dewittauction.com

Member Mo. & Miss. Auctioneer Assoc. - Lic. Nos: MO 14 & 85; AR 390 & 404; AL 611 & 1317; LA 239; Phil DeWitt MS 292; IL Firm No. 444000276; MS Firm No. 410F; TX 6538& 10982; TN Firm No. 2422; KY 6028; FL 1535; Brandon DeWitt AR 2535, MS 1471, IL 441.002267, KY 4216, TN 6941, Mo. RE Salesperson Lic. #2015019112, Ark. RE Salesperson Lic. #SA00080457; Jack Holifield TN 6847, AL 5350, LA 19365; Alyssa Nicole VonderHaar MO Real Estate Broker/Broker-Officer Lic. #2010010870/Corp. Lic. #2013017734

PLANNING AN AUCTION? CONTACT:
DEWITT AUCTION CO.
220 DeWitt Dr., Sikeston, MO
573-471-1060

220 Dewitt Dr. • Sikeston, MO 63801
573-471-1060

"Your Attendance Always Appreciated!"

Announcements made auction day take precedence over printed material.

FOR MORE INFORMATION, CONTACT:
Brandon DeWitt 573-380-5675
or DeWitt Auction 573-471-1060
or visit www.dewittauction.com