

Farm Machinery AUCTION

Monday, November 4, 2024 Early Start 9:30 a.m.

DeWitt Auction Co. Lot • 220 DeWitt Dr. • Sikeston, MO 63801

APPROX. 9:30 A.M. - Row 1: Duals, small field equipment and misc. items. Every item in Row 1 sells regardless of price.

NOTE: All tires are lined up behind Salvage Row to be sold after Row 1. All tires sell absolute.

APPROX. 10:00 A.M. - Row 2: All types of field equipment including cutters, disks, hay equipment and tillage equipment.

APPROX. 12:00 NOON - Construction Equipment including backhoes, track loaders, forklifts, rubber tire loaders and dirt scoops.

APPROX. 1:00 P.M. - Consignment from a Local Dealer and a Local Farmer. Listing on back.

APPROX. 1:00 P.M. - 50-75 Farm Tractors including 8320 RT JD 4920 hrs; 8310R JD 9718 hrs; 8285R JD 6082 hrs; 8285R JD 6471 hrs; 8235R JD 4834 hrs, front hitch; 8235R JD 5554 hrs; 8235R JD 8032 hrs; 8225R JD MFWD; 6105 JD 2 wh. w/mower; 8285R JD 6600 hrs.; 4955 JD 2 wh.; 8940 Case MFWD; 8230 JD MFWD; TG 255 New Holland; 4955 JD 2 wh.; 4840 JD; STS 430 Case 4 wh.; 7140 Case MFWD; MT765 Challenger track. *Partial listing only.*



Online bidding on major items provided by **Equipmentfacts**

DeWITT AUCTION CO.

Member Mo. & Miss. Auctioneer Assoc. - Lic. Nos: MO 14 & 85; AR 390 & 404; AL 611 & 1317; LA 239; Phil DeWitt MS 292; IL Firm No. 444000276; MS Firm No. 410F; TX 6538 & 10982; TN Firm No. 2422; KY 6028; FL 1535; Brandon DeWitt AR 2535, MS 1471, IL 441.002267, KY 4216, TN 6941; Jack Hollifield TN 6847, AL 5350, LA 19365 • www.dewittauction.com • 573-471-1060

DeWITT AUCTION CO.
220 DeWitt Drive
Sikeston, MO 63801

FIRST CLASS
U.S. POSTAGE
PAID
Permit No. 273
1 OZ.
Sikeston, Mo. 63801

FIRST CLASS MAIL

Farm Machinery AUCTION

MONDAY, NOV. 4, 2024

SALE TIME: APPROX. 1:00 P.M.

SIKESTON, MISSOURI

**Sale Site: DeWitt Auction Co. Lot
220 DeWitt Drive, Sikeston, Missouri**

CONSIGNMENT FROM A LOCAL DEALER

1-8320R John Deere, 480/80R50 R1W duals, 420/85R34 ILS fr. duals, power shift, 2019 yr., 5041 hrs., SN 1RW8320RAKS142100
1-8320R John Deere, 480/80R50 R1W duals, 380/80R38 ILS fr. duals, power shift, 5 remotes, 2018 yr., 5727 hrs., SN 1RW8320RTJP132093

1-8370RT John Deere, 25" tracks, wide drive wheel option, IVT trans., 5 remotes, prem. cab, 2015 yr., 4343 hrs., SN 1RW8370RCFD914406

1-8335R John Deere, 480/80R50 R1W duals, 420/85R34 ILS front duals, IVT trans., prem. cab, 5 remotes, leather trim. 2014 yr., 5088 hrs., SN 1RW8335RJED084976

1-8285R John Deere, 480/80R46 R1 duals, 1300 front 480/70R34, MFWD, power shift, deluxe cab, 2014 yr., 7649 hrs., SN 1RW8285RVEP083781

1-8310RT John Deere, 25" tracks, 72"-120", wide trac, power shift, deluxe cab, 2012 yr., 5462 hrs., SN 1RW8310RHCP907341
1-8410 John Deere, 20.8x42 R1W duals, 16.9x30 front, MFWD, 2000 yr., 10900 hrs., SN RW8410P005944

1-500 Versatile, 4WD, 710R42 R1W duals, 2015 yr., 3838 hrs., SN 704575

1-4940 John Deere dry box spreader, 480/80R50 R1, deluxe cab, HID lights, 2012 yr., 2794 hrs., SN 1NO4940XCC0018862
1-Rogator RG1100C sprayer, 380/90R46 R1, SS tank, 100' boom, 15" spacing, 2019 yr., 2381 hrs., SN AGCA1100CKNLL1163

CONSIGNMENT FROM A LOCAL FARMER

1-4940 John Deere sprayer, 380/105R50 R1, deluxe cab, HID lights, 120' booms, 15" nozzles, auto boom leveling, 1200 gallon SS tank, 2014 yr., 3164 hrs., SN 1NO4940XPD0028210

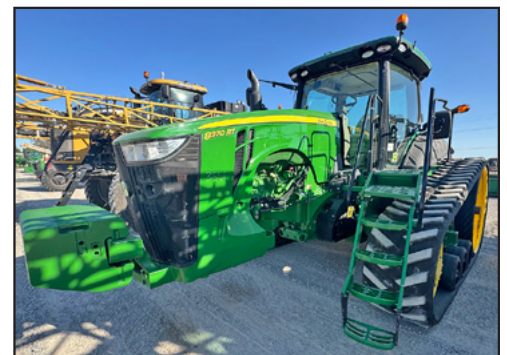
1-7250 Case IH, 20.8x42 R1 duals, 16.9x30, MFWD, 8218 hrs., SN JJA0058008

1-15' Woods Model 1800 batwing cutter
1-3750 Unverferth seed tender, 3 axle, w/ scales

1-Brent 876 grain cart w/tracks
1-Int. 10' offset disk

ONLINE BIDDING ON MAJOR ITEMS PROVIDED BY

Equipmentfacts



DEWITT AUCTION CO. CALENDAR OF UPCOMING AUCTIONS

- Nov. 4, 2024 - SIKESTON, MO - Farm Equipment & Construction Auction
DeWitt Auction Co. Lot - Mo. Lic. No. 14 & 85
- Nov. 6, 2024 - KENNETT, MO - Real Estate Auction Listings inside
Mo. Lic. No. 14 & 85; Alyssa Nicole VonderHaar Mo. Real Estate Broker/
Broker-Officer Lic. #2010010870/Corp. Lic. #2013017734
- Dec. 2, 2024 - SIKESTON, MO - Farm Equipment & Construction Auction
DeWitt Auction Co. Lot - Mo. Lic. No. 14 & 85
- Dec. 5, 2024 - DYERSBURG, TN - Equipment Auction - Tenn. Lic. No. 6941, 6847
- Dec. 7, 2024 - DYERSBURG, TN - Equipment Auction - Tenn. Lic. No. 6941, 6847
- Dec. 11, 2024 - SOUTH FULTON, TN - Equipment Auction - TN Firm No. 2422
- Jan. 6, 2025 - SIKESTON, MO - Farm Equipment & Construction Auction
DeWitt Auction Co. Lot - Mo. Lic. No. 14 & 85
- Jan. 15, 2025 - SHAW, MS - Equipment Auction - Miss. Lic. No. 281 & Firm No. 410F
- Jan. 27, 2025 - KENNETT, MO - Farm Equipment & Construction Auction
Mo. Lic. No. 14 & 85
- Jan. 30, 2025 - WEBB, MS - Farm Equipment & Construction Auction
Miss. Lic. No. 281 & Firm No. 410F
- Feb. 3, 2025 - SIKESTON, MO - Farm Equipment & Construction Auction
DeWitt Auction Co. Lot - Mo. Lic. No. 14 & 85
- Feb. 6, 2025 - Cash, AR - Equipment Auction - Ark. Lic. No. 390 & 404
- Mar. 3, 2025 - SIKESTON, MO - Farm Equipment & Construction Auction
DeWitt Auction Co. Lot - Mo. Lic. No. 14 & 85
- Apr. 7, 2025 - SIKESTON, MO - Farm Equipment & Construction Auction
DeWitt Auction Co. Lot - Mo. Lic. No. 14 & 85
- May 5, 2025 - SIKESTON, MO - Farm Equipment & Construction Auction
DeWitt Auction Co. Lot - Mo. Lic. No. 14 & 85
- June 2, 2025 - SIKESTON, MO - Farm Equipment & Construction Auction
DeWitt Auction Co. Lot - Mo. Lic. No. 14 & 85
- July 7, 2025 - SIKESTON, MO - Farm Equipment & Construction Auction
DeWitt Auction Co. Lot - Mo. Lic. No. 14 & 85

ATTENTION CONSIGNORS: DeWitt Auction Co. will no longer protect any consignor's equipment. Any equipment on our lot will go through the auction and if the consignor is not at the auction, the equipment will be sold and the consignor will be paid.

We Have New Armor Lite Hopper Bottom Trailers In Stock: 38', 40', And 42'

AUCTIONS CONDUCTED BY

JEFF DEWITT AUCTION CO., INC.

Member Mo. & Miss. Auctioneer Assoc. - Lic. Nos: MO 14 & 85; AR 390 & 404; AL 611 & 1317; LA 239; Phil DeWitt MS 292, IL Firm No. 444000276; MS Firm No. 410F; TX 6538 & 10982; TN Firm No. 2422; KY 6028; FL 1535; Brandon DeWitt AR 2535, MS 1471, IL 441.002267, KY 4216, TN 6941, Mo. RE Salesperson Lic. #2015019112, Ark. RE Salesperson Lic. #SA00080457; Jack Hollifield TN 6847, AL 5350, LA 19365 • Alyssa Nicole VonderHaar Mo. Real Estate Broker/Broker-Officer Lic. #2010010870/Corp. Lic. #2013017734, Ark. Real Estate Broker, Lic. #PB00081311

220 DeWitt Dr. • Sikeston, MO 63801 • 573-471-1060 • "Your Attendance Always Appreciated"
Note: DeWitt Auction Co. does not guarantee the condition of any item sold in this auction. Announcements made day of auction take precedence over printed material.

MOLL PRINTING CO. • SIKESTON, MO 63801 • 573-472-1848



LOADER AVAILABLE
LUNCH AVAILABLE

SALE CONDUCTED BY

DeWitt Auction Co.

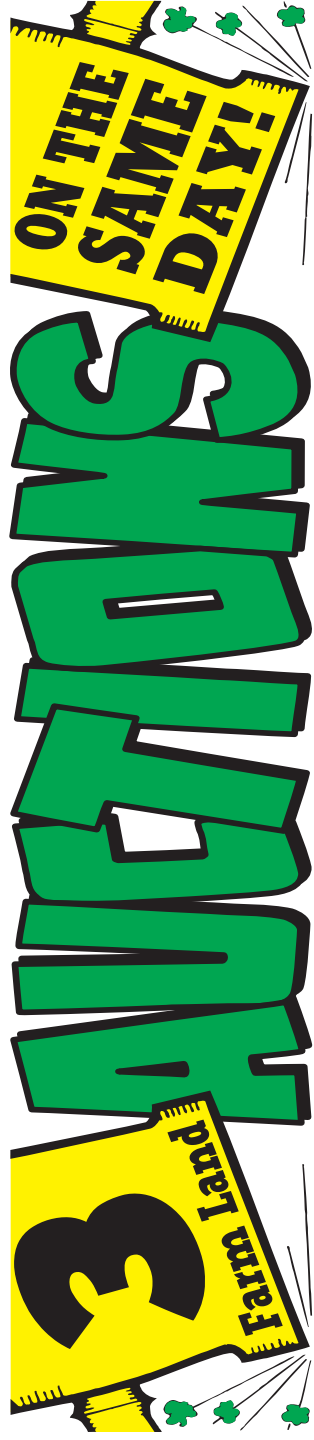
NO BUYER PREMIUM
www.dewittauction.com

Member Mo. & Miss. Auct. Assoc. - Lic. Nos: MO 14 & 85; AR 390 & 404; AL 611 & 1317; LA 239; Phil DeWitt MS 292; IL Firm No. 444000276; MS Firm No. 410F; TX 6538 & 10982; TN Firm No. 2422; KY 6028; FL 1535; Brandon DeWitt AR 2535, MS 1471, IL 441.002267, KY 4216, TN 6941; Jack Hollifield TN 6847, AL 5350, LA 19365

Planning an auction? Contact:
DeWITT AUCTION CO.
573-471-1060
800-533-9488
www.dewittauction.com

220 DeWitt Dr. • Sikeston, MO 63801
573-471-1060
"Your Attendance Always Appreciated"
Note: DeWitt Auction Co. does not guarantee the condition of any item sold in this auction. Announcements made day of auction take precedence over printed material.

For more information, contact:
DeWITT AUCTION CO.
573-471-1060
800-533-9488
www.dewittauction.com



Tract 1: 87.63+/- Acres Located in New Madrid County, MO
Tract 2: 29+/- Acres Located in Dunklin County, MO
Tract 3: 75+/- Acres Located in Dunklin County, MO

WEDNESDAY, NOV. 6, 2024 - KENNETT, MISSOURI
Sale Time: 2:00 p.m. - Sale Site: Kennett American Legion Building On Hwy. 412 Across From Walmart

Tract #1
Owner: Estate of Irene Gee

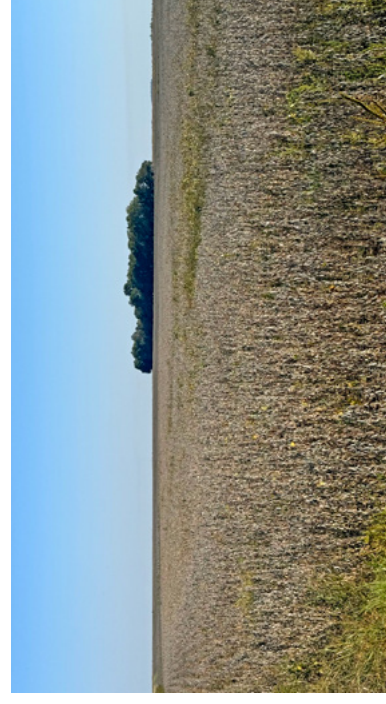
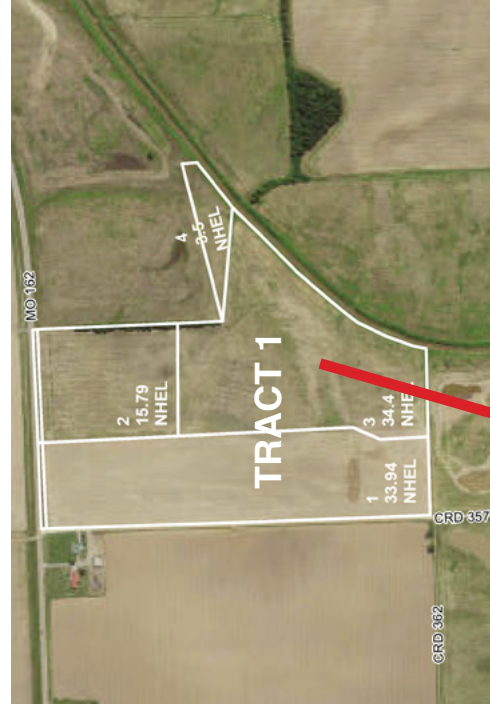
AUCTIONEER'S NOTE: Jeff DeWitt Auction Co. Inc. has been commissioned to sell at public auction approximately 87.63 acres +/- of row crop farmland in New Madrid County, Missouri. The Gee family has owned this farm for several decades and has decided to sell the farm after the passing of Ms. Irene Gee. This is prime farmland suitable for cotton, corn, wheat, and soybeans. FSA reports will be available at auction.

87.63 ACRES +/- LOCATED NEAR PORTAGEVILLE IN NEW MADRID COUNTY, MO

Tshp 21N, Rge 12E, Sec 28
FSA Farm #1428

DIRECTIONS TO FARM: From Portageville, MO at the intersection of US Hwy 61 and MO-162, head West on MO-162 for 4.5 miles. The farm is on the South side of the road just West of Little River.

Crop Name	Base Acres	PLC Yield
Soybeans	4.7	32
Seed Cotton	66.24	2315
Unassigned Generic Base	16.56	0
Total	87.5	



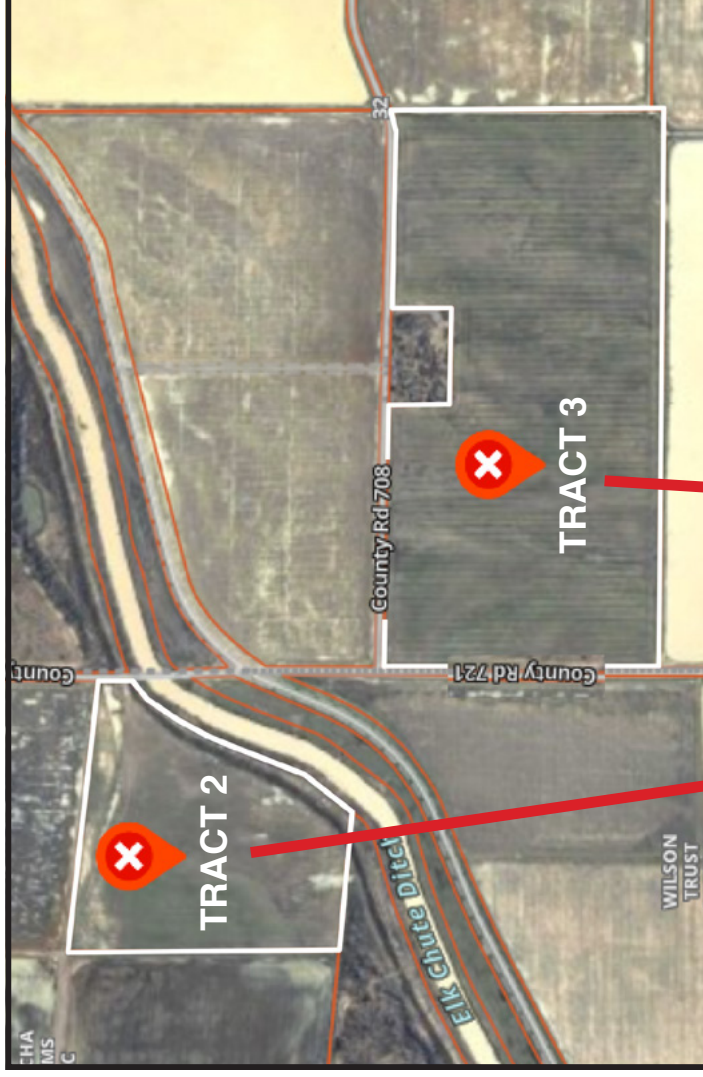
Tract #2 – Owner: Estate of Linda Owen

AUCTIONEER'S NOTE: Jeff DeWitt Auction Co. Inc. has been commissioned by the Estate of Linda Owen to sell at public auction approx. 29 acres +/- of row crop farmland in Dunklin County, Missouri.

29 ACRES +/- LOCATED NEAR KENNETT IN DUNKLIN COUNTY, MO

Tshp 18N, Rge 10E, Sec 31

DIRECTIONS TO FARM: From Kennett, MO, go east on U.S. Highway 412 for approx. 4 miles to County Line Road/State Highway NN. Head south on County Line Rd. for 3.5 miles until you reach State Highway UU. Turn right on State Highway UU and head west for approx. 4.1 miles. State Highway UU will turn south and the road will become County Road 721. The farm is located on the west side of County Road 721 and lies directly next to Elk Chute Ditch.



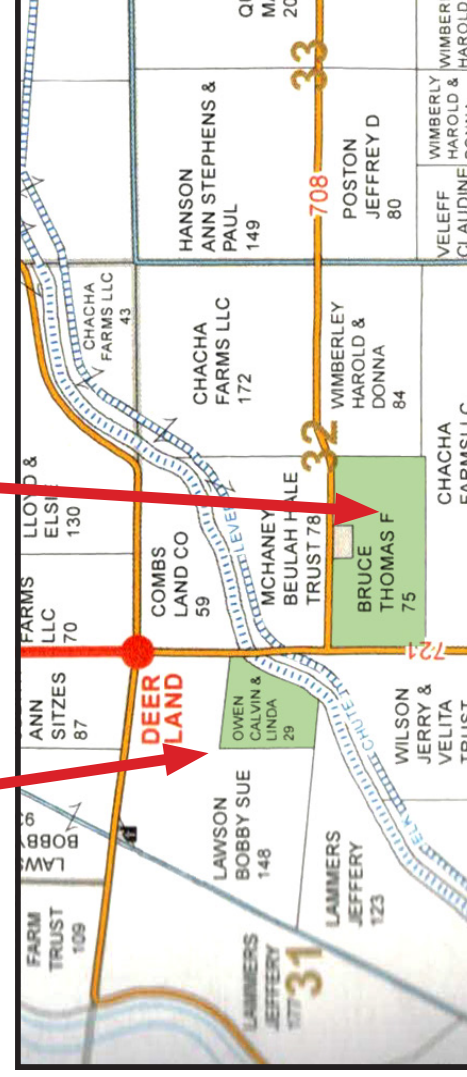
Tract #3 – Owners: Thomas and Helen Bruce

AUCTIONEER'S NOTE: Jeff DeWitt Auction Co. has been commissioned by Thomas and Helen Bruce to sell a public auction approximately 75 acres +/- of row crop farmland. The owners have retired and moved away from the area.

75 ACRES +/- LOCATED NEAR KENNETT IN DUNKLIN COUNTY, MO

Tshp 18N, Rge 10E, Sec 32

DIRECTIONS TO FARM: From Tract 2 head south on County Road 721. The farm will be on your left at the intersection of County Roads 708 and 721.



FOR MORE INFORMATION, CONTACT: JEFF DEWITT AUCTION CO., INC. 573-471-1060

TERMS: 10% of highest bid (non-refundable) due at conclusion of auction. Balance due on or before closing within 60 days. Closing will be handled by Pelts Title Co. in Kennett, Mo. Closing costs to be divided equally between buyer and seller. Seller will collect 2024 rents and pay 2024 real estate taxes. Buyer will take possession following 2024 crop.

6% Buyer's Premium will be added to last bid in order to establish selling price and is payable day of auction.
NOTE: We urge you to drive out and inspect these fine properties before auction day.

Visit our website:
www.dewittauction.com

Member Mo. & Miss. Auctioneer Assoc. - Lic. Nos: MO 14 & 85; AR 390 & 404; AL 611 & 1317; LA 239; Phil DeWitt MS 292; IL Firm No. 444000276; MS Firm No. 410F; TX 6538 & 10982; TN Firm No. 2422; KY 6028; FL 1535; Jack Holifield TN 6847, AL 5350, LA 19365; Brandon DeWitt AR 2535, MS 1471, IL 441,002267, KY 4216, TN 6941, Mo. RE Salesperson Lic. #2015019112, Ark. RE Salesperson Lic. #SA00080457; Alyssa Nicole VonderHaar MO Real Estate Broker/Broker-Officer Lic. #2010010870/Corp. Lic. #2013017734

PLANNING AN AUCTION? CONTACT:
DeWitt Auction Co., Inc.
 220 DeWitt Dr.
 Sikeston, MO 63801
 573-471-1060

AUCTION CONDUCTED BY:

DeWitt Auction Co., Inc.

Visit our website:
www.dewittauction.com

220 Dewitt Dr. • Sikeston, MO 63801
573-471-1060
"Your Attendance Always Appreciated!"
 ANNOUNCEMENTS MADE AUCTION DAY TAKE PRECEDENCE OVER PRINTED MATERIAL.

FOR MORE INFORMATION, CONTACT:
JEFF DEWITT AUCTION CO., INC.
573-471-1060
 or visit www.dewittauction.com