

CONSIGNMENTS FROM 3 LOCAL FARMERS
AUCTION

TUESDAY, APR. 15, 2025
SALE TIME: 10:00 A.M.



GIN CITY, ARKANSAS

AUCTIONEER'S NOTE: Three local farmers are making changes in their farming operations and have commissioned DeWitt Auction Co. to sell the following list of farm machinery at public auction.

Auction Conducted By:
DeWITT AUCTION CO.
220 DeWitt Drive
Sikeston, MO 63801

FIRST CLASS
U.S. POSTAGE
PAID
Permit No. 273
1 OZ.
Sikeston, Mo. 63801

FIRST CLASS MAIL

CONSIGNMENTS FROM 3 LOCAL FARMERS
AUCTION

TUESDAY, APRIL 15, 2025
SALE TIME: 10:00 A.M.



GIN CITY, ARKANSAS

AUCTIONEER'S NOTE: Three local farmers are making changes in their farming operations and have commissioned DeWitt Auction Co. to sell the following list of farm machinery at public auction.

DIRECTIONS: From Bradley, Ark. head West on AR-160 for 4.5 miles to the auction location in Gin City.

PHYSICAL ADDRESS: 4099 Highway 160, Bradley, Arkansas 71826

Online Bidding Provided By
Equipmentfacts
Powered by TractorHouse.com, MachineryTrader.com, TruckPaper.com & MarketBook.com



CONSIGNMENTS FROM 3 LOCAL FARMERS
AUCTION

TUESDAY, APRIL 15, 2025
SALE TIME: 10:00 A.M.

GIN CITY, ARKANSAS

AUCTIONEER'S NOTE: Three local farmers are making changes in their farming operations and have commissioned DeWitt Auction Co. to sell the following list of farm machinery at public auction.

Online Bidding Provided By
Equipmentfacts
Powered by TractorHouse.com, MachineryTrader.com, TruckPaper.com & MarketBook.com



SEE INSIDE FOR EQUIPMENT LISTING AND MORE PHOTOS



LOADER AVAILABLE
LUNCH AVAILABLE

SALE CONDUCTED BY
Jeff DeWitt Auction Co.

NO BUYER PREMIUM
www.dewittauction.com

Member Mo. & Miss. Auctioneer Assoc. - Lic. Nos: MO 14 & 85; AR 390 & 404; AL 611 & 1317; LA 239; Phil DeWitt MS 292; IL Firm No. 444000276; MS Firm No. 410F; TX 6538 & 10982; TN Firm No. 2422; KY 6028; FL 1535; Brandon DeWitt AR 2535, MS 1471, IL 441.002267, KY 4216, TN 6941; Jack Holifield TN 6847, AL 5350, LA 19365

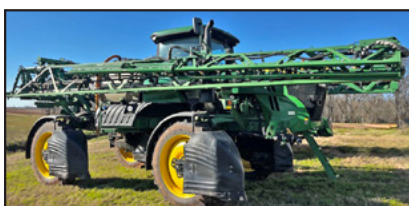
Planning an auction? Contact:
DeWITT AUCTION CO.
220 DeWitt Drive
Sikeston, MO 63801
573-471-1060

220 DeWitt Dr. • Sikeston, MO 63801
573-471-1060

"Your Attendance Always Appreciated"

Note: DeWitt Auction Co. does not guarantee the hours or condition of any item sold in this auction. Announcements made auction day take precedence over printed material.

For more information, contact:
**Owners at Numbers
Given Inside
or Mike Estes 870-919-6797**
or visit www.dewittauction.com



CONSIGNMENTS FROM 3 LOCAL FARMERS

AUCTION

TUESDAY, APRIL 15, 2025 SALE TIME: 10:00 A.M.

Online Bidding Provided By **Equipmentfacts**
Powered by TractorHouse.com, MachineryTrader.com, TruckPaper.com & MarketBook.com



GIN CITY, ARKANSAS

AUCTIONEER'S NOTE: Three local farmers are making changes in their farming operations and have commissioned DeWitt Auction Co. to sell the following list of farm machinery at public auction.

DIRECTIONS: From Bradley, Ark. head West on AR-160 for 4.5 miles to the auction location in Gin City.
PHYSICAL ADDRESS: 4099 Highway 160, Bradley, Arkansas 71826

Owner: Delaney Koehn 870-904-1622

TRACTORS, SPRAYER

- 1-8R 370 John Deere tractor, 480/80R50 R1W duals, 420/85R34 front duals, ILS, IVT trans., 6 remotes, air seat, hyd. power steering, 1714 hrs., ext. warranty comp. July 2028, John Deere signature cab, SN 1RW8370DCC205158, (Note: Sells subject to John Deere payoff.)
- 1-8430 John Deere tractor, 480/80R50 R1 duals, 420/85R34 front duals, ILS front, 8305 hrs.
- 1-R4038 John Deere sprayer, 380/90R46 R1, 120' booms, prem. cab, LED lights, 953 hrs., warranty power train approx. 2027, 2020 yr., (Note: Sells subject to John Deere payoff.)
- 1-1066 International
- 1-3020 John Deere

FIELD EQUIPMENT

- 1-1725 John Deere planter, 12 row 30", stack fold, 3 bushel boxes, variable drive hydr. drive, 2016 yr., SN 1A01725RJFM765207
- 1-12 row 30" Roll-A-Cone hipper, w/ smooth roller
- 1-Brandt HR32 hipper roller, 12 row 30"
- 1-Kelly diamond tool, 46', rolling harrow, 2020 yr., SN 2200169

- 1-30' John Deere 2410 chisel plow
- 1-36' 5" John Deere 2210 field cultivator, w/5 bar harrow
- 1-36' Case IH #370 disk
- 1-520 John Deere hi-speed flail shredder
- 1-Athens 220 levee plow
- 1-15' John Deere bat wing cutter
- 1-EZ Drop poly pipe roller
- 1-20" Hurricane PTO ditcher
- 1-20' deckover trailer, 2 axle
- 1-Caldwell V-ripper
- 1-14C Reynolds dirt scoop, SN 18327

HARVEST EQUIPMENT

- 1-S780 John Deere combine, LSW 1400/30R46 flotation, 750/65R26 rear, 4 wh., Contour, tristream roto, power bin, power cast tail board, 1200 hrs., 2019 yr., SN 1H0S780SAKT806428
- 1-Drago 12 row Series 2 corn header
- 1-Header trailer
- 1-2013 Western Star semi, sleeper
- 1-2006 Kenworth T-800 semi, day cab, w/rebuilt Cat engine
- 1-2002 Wilson aluminum hopper bottom
- 1-2010 Corn Husker aluminum hopper trailer,

Owner: Dale Seiler 870-299-2004

- 1-Case IH 400 row trac, 120" spacing, 4633 hrs., 3 pt. PTO
- 1-Case IH 620 HD, 4 wh.
- 1-8335R John Deere tractor, 50" duals, IVT trans., ILS front, 5500 hrs.
- 1-S680 John Deere combine, 520/85R42 R1 duals, 4 wh. drive
- 1-Chandler 26 litter spreader, w/ swath control, rate controller
- 1-40' John Deere 2680 high speed disk
- 2-12 row Orthman lister bedder, 1-38", 1-30"
- 2-12 row Bingham Bros. hipper rollers, 1-38", 1-30"
- 1-36' John Deere 2210 field cult.
- 2-Drago 12 row corn header, 30", 1-Series 1, 1-Series 2
- 1-120' Salford Sniper fertilizer spreader
- 2-2021 Polaris Model 1000
- 1-40' John Deere 1990 no till drill
- 1-46' McFarland rolling harrow

Owner: Bruce Nichols 870-904-1839

TRACTORS, SPRAYER

- 1-8335R John Deere, 480/80R50 R1 duals, 480/70R34 front duals, ILS, prem. cab, IVT trans., 4 remotes, SN 1RW8335RPBD047435
- 1-8230 John Deere, 480/80R50 R1 duals, MFWD, 7761 hrs.
- 1-9530 John Deere, 4 wh. drive, 800/70R38 R1 duals, power shift, leather trim, 5596 hrs., SN 9530P001435
- 1-8400 John Deere, 18.4x46 R2 duals, 8314 hrs.
- 1-4640 John Deere, cab, 2 wh.
- 1-M6800 Kubota, w/loader
- 1-Case IH SPX 4410 sprayer, 90' booms, 3895 hrs.

FIELD EQUIPMENT

- 1-33' 7" John Deere vertical till
- 1-12 row Case IH 4025A 3PS twin row planter, 38"
- 1-12 row John Deere 1720 planter, 38"
- 1-12 row Roll-A-Cone hipper, 38"
- 1-12 row liquid applicator, w/ tank & pump
- 1-33' Sunflower disk, Model #1434
- 1-33' Sunflower disk, Model #1435
- 1-45 John Deere 980 field cultivator
- 1-12 row Orthman cultivator, 38"

1-12 row Lilliston rolling cultivator, 38"

- 1-9 shank Krause Dominator
- 1-Great Plains 20/20 grain drill
- 2-Loftness frail mower, 1-3 pt.
- 1-Hicks Bros. poly pipe
- 1-28' Case IH Vibra-Shank

HARVESTING EQUIPMENT

- 1-9770 STS John Deere combine, 900/65R32, 18.4x30 rear, 4 wh., prem. cab, Contour, spreader, SN 1H09770SED0742748
- 1-608C John Deere corn header
- 1-640 John Deere flex draper
- 1-840R Industrial America hi-speed header trailer
- 1-JM 1051-22 grain cart, SN 2210672
- 1-Kinze 1040 grain cart
- 1-Westfield MKX 130-94 grain auger w/swing

TRUCKS, TRAILERS

- 1-2015 Peterbilt semi, Model 579, very nice truck
- 1-2003 International semi, Model 9400
- 1-2006 Wilson aluminum hopper trailer

MISCELLANEOUS ITEMS

- 1-SC2200 bulk seed tender
- 1-Tensas transport trailer
- 1-9C Reynolds dirt scoop
- 1-Reynolds land plane



SALE CONDUCTED BY

DeWitt Auction Co.

Member Mo. & Miss. Auctioneer Assoc. - Lic. Nos: MO 14 & 85; AR 390 & 404; AL 611 & 1317; LA 239; Phil DeWitt MS 292; IL Firm No. 444000276; MS Firm No. 410F; TX 6538 & 10982; TN Firm No. 2422; KY 6028; FL 1535; Brandon DeWitt AR 2535, MS 1471, IL 441.002267, KY 4216, TN 6941; Jack Holifield TN 6847, AL 5350, LA 19365

220 DeWitt Dr. • Sikeston, MO 63801
573-471-1060
"Your Attendance Always Appreciated"

Note: DeWitt Auction Co. does not guarantee the hours or condition of any item sold in this auction. Announcements made auction day take precedence over printed material.

LOADER & LUNCH AVAILABLE

Planning an auction? Contact:
DeWITT AUCTION CO.
 220 DeWitt Drive
 Sikeston, MO 63801
 573-471-1060

VISIT OUR WEBSITE:
www.dewittauction.com

For more information, contact:
OWNERS AT NUMBERS GIVEN WITH LISTINGS
 or Mike Estes 870-919-6797
 or visit www.dewittauction.com

