

# FARM EQUIPMENT RETIREMENT AUCTION

Wed., February 5, 2025

SALE TIME: 10:00 A.M.



**DYERSBURG, TENNESSEE**  
OWNER: ANDY BIVENS

**DIRECTIONS:** From Highway 51 in Dyersburg, take Upper Finley Road West 3.2 miles to sale site. **PHYSICAL ADDRESS:** 4965 Upper Finley Rd, Dyersburg, TN 38024

Auction Conducted By:  
**DeWitt Auction Co.**  
220 DeWitt Drive  
Sikeston, MO 63801

FIRST CLASS  
U.S. POSTAGE  
PAID  
Permit No. 273  
1 OZ.  
Sikeston, Mo. 63801

# FARM EQUIPMENT RETIREMENT AUCTION

WEDNESDAY, FEBRUARY 5, 2025

SALE TIME: 10:00 A.M.

**DYERSBURG, TENNESSEE**

**OWNER: ANDY BIVENS**

**AUCTIONEER'S NOTE:** After many years of farming, Mr. Andy Bivens has commissioned DeWitt Auction Co. to sell this list of equipment at public auction.

Online bidding available at:  
**Equipmentfacts**  
Powered by TractorHouse.com, MachineryTrader.com, TruckPaper.com & MarketBook.com



**DIRECTIONS:** From Highway 51 in Dyersburg, take Upper Finley Road West 3.2 miles to sale site. **PHYSICAL ADDRESS:** 4965 Upper Finley Rd, Dyersburg, TN 38024

# FARM EQUIPMENT RETIREMENT AUCTION

Wed., February 5, 2025

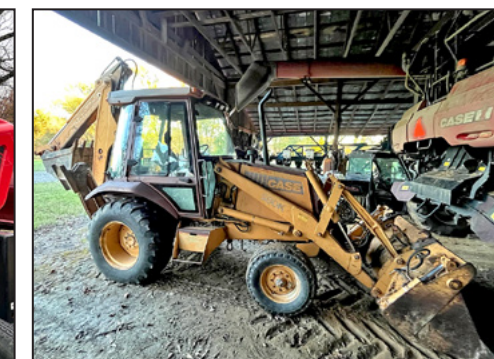
Sale Time: 10:00 a.m.

**Dyersburg, Tennessee**

Owner: Andy Bivens

Online bidding available at:

**Equipmentfacts**  
Powered by TractorHouse.com, MachineryTrader.com, TruckPaper.com & MarketBook.com



**SEE INSIDE FOR FULL LISTING AND MORE PHOTOS**

LUNCH AVAILABLE  
LOADER AVAILABLE

SALE CONDUCTED BY:

**DeWitt Auction Co.**

VISIT OUR WEBSITE:  
[www.dewittauction.com](http://www.dewittauction.com)

Member Mo. & Miss. Auctioneer Assoc. - Lic. Nos: MO 14 & 85; AR 390 & 404; AL 611 & 1317; LA 239; Phil DeWitt MS 292; IL Firm No. 444000276; MS Firm No. 410F; TX 6538 & 10982; TN Firm No. 2422; KY 6028; FL 1535; Brandon DeWitt AR 2535, MS 1471, IL 441.002267, KY 4216, TN 6941; Jack Holifield TN 6847, AL 5350, LA 19365

PLANNING AN AUCTION? CONTACT:  
**DeWitt Auction Co.**  
220 DeWitt Drive  
Sikeston, Mo. 63801  
573-471-1060

**220 DeWitt Drive**  
**Sikeston, MO 63801**  
**573-471-1060**

*"Your Attendance Always Appreciated"*

Note: DeWitt Auction Co. does not guarantee the hours or condition of any item sold in this auction. Announcements made auction day take precedence over printed material.

FOR MORE INFORMATION, CONTACT:  
**Andy Bivens 731-431-6114**  
**John Scott Sartin 731-676-6992**  
or **Jeff Sartin 731-695-7654**  
or visit [www.dewittauction.com](http://www.dewittauction.com)



# FARM EQUIPMENT RETIREMENT AUCTION



**WEDNESDAY, FEBRUARY 5, 2025** **SALE TIME: 10:00 A.M.**

**DYERSBURG, TENNESSEE** **OWNER: ANDY BIVENS**

**AUCTIONEER'S NOTE:** After many years of farming, Mr. Andy Bivens has commissioned DeWitt Auction Co. to sell this list of equipment at public auction.  
**DIRECTIONS:** From Highway 51 in Dyersburg, take Upper Finley Road West 3.2 miles to sale site. **PHYSICAL ADDRESS:** 4965 Upper Finley Road, Dyersburg, TN 38024

Online bidding available at:  
**Equipmentfacts**  
Powered by TractorTrader.com, MachineryTrader.com, TruckTrader.com & MarketBook.com



## TRACTORS

- 1-Case 8950 tractor, 4473 hrs., FWA, 16.9/30 Front Tires, 20.8x42 Rear Duals, Big 1000 PTO, Quick Hitch, Full Weights, SN JJA0079548
- 1-Case MX230 tractor, 2383 hrs., 14.9x34 Front Tires, 18.4x36 Rear Duals, Big/Small PTO, Outback S3 Guidance, FWA, Quick Hitch, SN JAZ136598

## HARVEST EQUIPMENT

- 1-Case 7230 Combine, 3191/2352 Hrs., Luxury Cab, Power Fold Extensions, 620/70R42 Front Duals, 600/65R28 Rear Self Leveling Sieves, Pro 700 Guidance, SN Y06219930
- 1-Case 2162 Draper Flex Header, 35', Recent New Belts, SN YDZN35605
- 1-Duolift DLT37 37' Hi Speed Header Trailer
- 1-J&M HT874 25' Header Trailer, Big Wheels
- 1-Kelderman Corn Reel 6-8 Row
- 1-A&L F500 Grain Cart, 500 Bushel, Small 100 PTO
- 1-John Deere 9965 Cotton Picker, 2648/1870 hrs., 4 Row 38" Conv. Heads, 2WD
- 1-KBH Module Builder, 4 Row,



## Automatic Bridge 1-KBH Boll Buggy, Single Motor Packer SPRAYER

- 1-Case 3230 Sprayer, 3520 hrs., 100' Booms, 20" Spac, Aim Command, Pro 700 Mon, Guidance, Fence Row Nozzles, 14.9/46 Tires, 5 Way Nozzle Bodies, SN YBTC29686
- 1-KBH Liquid Fertilize Applicator, 8 Row 38", Manual Fold
- 1-Nichols Lay By Sprayer, 8 Row 38"
- 1-Red Ball Hooded Sprayer, 8 Row 38"
- 1-Adams 1600 Gal Water Trailer, 35 Gal Mix Tank
- 1-S&N 1000 Gal Water Trailer
- 1-1000 Gal Steel Water Trailer

## PLANTING EQUIPMENT

- 1-Kinze 3600 Planter, 12/23 19"/38", No Till Coulters, Row Cleaners, Spiked Closing Wheels, KPM 3 Monitor, 23 Soybean Meters, 12 Precision Corn Meters, SN 615075
- 1-Great Plains 1504 G Drill, 30' 7.5 Spacing, Folding Yetter Markers
- 1-Speed King 160 Seed Tender

## FIELD EQUIPMENT

- 1-McFarlane Reel Disk 30"
- 1-Wilrich 1400 Scratcher Do-All 8 Row
- 1-Case 496 Disk 28' 9"

- 1-Case 496 Disk 25' 9"
- 1-Case 4800 Field Cultivator 28'
- 1-Remlinger Crumbler 31'
- 1-McFarlane Harrow 40'
- 1-Forrest City Ditcher
- 1-Rhino 1540 3pt Blade 10'
- 1-Rhino 1400 3pt Blade 10'
- 1-Durabilt Box Blade Pull Type 12'
- 1-Bush Hog 2615L Bat Wing Mower 15'
- 1-Bush Hog SM160R 3pt side mt mower
- 1-Alloway Shredder 6 Row
- 1-AC Disk 21' 9"
- 1-W&A Do-All 3pt 8 Row
- 1-Bush Hog Hipper 8 Row
- 1-IH 183 Cultivator 8 Row
- 1-Case Chisel Plow 3 pt., 13 Shank
- 1-IH Chisel Plow 3 pt., 11 Shank
- 1-IH Root Rake
- 1-IH 45 3 pt. field cultivator
- 1-AC 1300 Field Cultivator 24'

## CONSTRUCTION EQUIPMENT

- 1-Case 580k Backhoe, Ext Hoe, 4 In 1 Bucket, 2WD, 6402 Hrs.
- 1-Cat D3C Dozer, 6 Way Blade, Limb Lifters, 3204 Engine 5789 Hrs.
- 1-Reynolds 10C Dirt Pan

## TRUCKS & TRAILERS

- 1-2001 International 9400i Semi, 999,119 Miles 12.7 Detroit 10sp.

- 1-2005 Freightliner Columbia, MB460 Mercedes 10sp, Wet Kit
- 1-1995 International 8100 Service Truck, C10 L10 Cummins, 9 Sp, 10' Flatbed
- 1-1989 Ford L9000 Grain Truck, 855 Cummins, 9 Sp, 18' Knapheide Dump Bed
- 1-1985 GMC General Grain Truck, 6V92 Detroit, 9sp, 20' Knapheide Dump Bed
- 1-CPS Hopper Bottom 42', 1998 Model
- 1-CPS Hopper Bottom 38', 1993 Model
- 1-Wil-Ro Tilt Trailer
- 1-Fuel Trailer, 500 Gal Tank
- 1-Polaris Ranger 900 XP, 3754 Miles, 1205 Mod
- 1-Reading Utility Bed 9' Fits Cab & Chassis
- 1-1000 gallon fuel tank w/pump



LUNCH AVAILABLE  
LOADER AVAILABLE

SALE CONDUCTED BY  
**Dewitt Auction Co.**

VISIT OUR WEBSITE:  
[www.dewittauction.com](http://www.dewittauction.com)

Member Mo. & Miss. Auctioneer Assoc. - Lic. Nos: MO 14 & 85; AR 390 & 404; AL 611 & 1317; LA 239; Phil DeWitt MS 292; IL Firm No. 444000276; MS Firm No. 410F; TX 6538 & 10982; TN Firm No. 2422; KY 6028; FL 1535; Brandon DeWitt AR 2535, MS 1471, IL 441.002267, KY 4216, TN 6941; Jack Holifield TN 6847, AL 5350, LA 19365

Planning an auction? Contact:  
**DeWitt AUCTION CO.**  
220 DeWitt Dr.  
Sikeston, MO 63801  
573-471-1060

220 DeWitt Drive  
Sikeston, MO 63801  
573-471-1060

"Your Attendance Always Appreciated"

For more information, contact:  
**Andy Bivens 731-431-6114**  
**John Scott Sartin 731-676-6992**  
or **Jeff Sartin 731-695-7654**  
or visit [www.dewittauction.com](http://www.dewittauction.com)

Note: DeWitt Auction Co. does not guarantee the hours or condition of any item sold in this auction. Announcements made auction day take precedence over printed material.